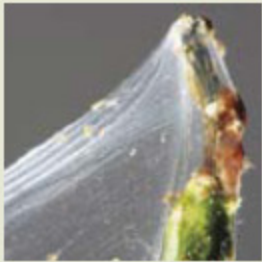


Identify the Insect



Chompers - Insects that chew through the entire leaf. Damage appears as jagged edges or holes in the leaves. Examples: caterpillars, weevils, grasshoppers



Stipplers - Insects with sucking mouthparts that remove plant juices and leave a dot, fleck or speckle on the leaf surface. Examples: lace bugs, spider mites



Distortioners - Insects with rasping or sucking mouthparts. Damage causes plant parts to twist, curl or become distorted. Examples: psyllids, thrips



Miners - Insects that feed inside the leaves between the upper and lower surfaces. Wormlike larvae causes the damage. Example: leafminers



Skeletonizers - Some of these insects chew plant tissue off one side of the leaf while leaving the opposite leaf cuticle and veins intact. Examples: sawfly larvae, Japanese beetle adults



Squirters - Insects with sucking mouthparts that pull large amounts of fluid from the plant and excrete honeydew, which makes everything below sticky and attractive to other insects, such as wasps, ants and flies. Black sooty mold may grow on leaves covered with honeydew. Examples: aphids, scales



Protectors - Some of these insects protect themselves in a silk covering or roll/curl leaves around their bodies, and others may produce a spit-like substance in which to live. Examples: webworms, leafrollers, spittle bugs